

Product Sheet

H_DLL3 LLC1 Cell Line

Catalog number: GM-C40636

Version 3.3.1.250630

Description	H_DLL3 LLC1 Cell Line is a clonal stable LLC1 cell line that constitutively expresses the human DLL3 gene, constructed using lentiviral technology.
Quantity	5E6 Cells per vial, 1 mL
Product Format	3 vials of frozen cells
Shipping	Shipped on dry ice
Storage Conditions	Liquid nitrogen immediately upon receipt
Target	Human_DLL3
Gene ID/Uniprot ID	Q9NYJ7-1(AA Met 1 - Leu 492)
Host Cell	LLC1
Recovery Medium	DMEM+10% FBS+1% P.S
Growth medium	DMEM+10% FBS+1% P.S+1 µg/mL Puromycin
Note	None
Freezing Medium	90% FBS+10% DMSO
Growth properties	Adherent
Growth Conditions	37°C, 5% CO ₂
Mycoplasma Testing	The cell line has been screened to confirm the absence of Mycoplasma species.
Safety considerations	Biosafety Level 2
Note	It is recommended to expand the cell culture and store a minimum of 10 vials at an early passage for potential future use.

Materials

Reagent	Manufacturer/Catalogue No.
DMEM	Gibco/C11995500BT
Fetal Bovine Serum	ExCell/FSP500
Pen/Strep	Thermo/15140-122
Puromycin	Genomeditech/ GM-040401
Anti-H_DLL3 hIgG1 Antibody(Rovalpituzumab)	Genomeditech/ GM-26560AB

Figures

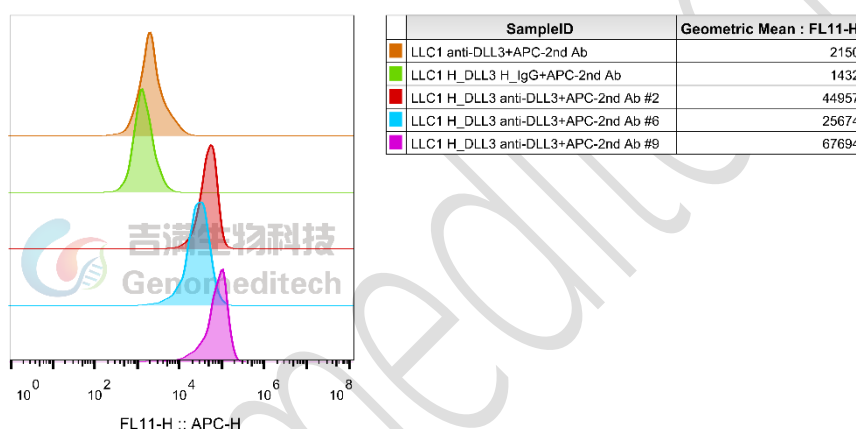


Figure 1 | H_DLL3 LLC1 Cell Line (Cat. GM-C40636) was determined by flow cytometry using Anti-H_DLL3 hIgG1 Antibody(Rovalpituzumab) (Cat. [GM-26560AB](#)).

Cell Recovery

Recovery Medium: DMEM+10% FBS+1% P.S

To insure the highest level of viability, thaw the vial and initiate the culture as soon as possible upon receipt. If upon arrival, continued storage of the frozen culture is necessary, it should be stored in liquid nitrogen vapor phase and not at -70°C. Storage at -70°C will result in loss of viability.

- Thaw the vial by gentle agitation in a 37°C water bath. To reduce the possibility of contamination, keep the O-ring and cap out of the water. Thawing should be rapid (approximately 2 - 3 minutes).
- Remove the vial from the water bath as soon as the contents are thawed, and decontaminate by dipping in or spraying with 70% ethanol. All of the operations from this point on should be carried out under strict aseptic conditions.
- Transfer the vial contents to a centrifuge tube containing 5.0 mL complete culture medium and spin at approximately 176 x g for 5 minutes. Discard supernatant.
- Resuspend cell pellet with the recommended recovery medium. And dispense into appropriate culture dishes.

- e) Incubate the culture at 37°C in a suitable incubator. A 5% CO₂ in air atmosphere is recommended if using the medium described on this product sheet.

Cell Freezing

Freezing Medium: 90% FBS+10% DMSO

- Centrifuge at 176 x g for 3 minutes to collect cells.
- Resuspend the cells in pre-cooled freezing medium and adjust the cell density to 5E6 cells/mL.
- Aliquot 1 mL into each vial.
- Place the vial in a controlled-rate freezing container and store at -80°C for at least 1 day, then transfer to liquid nitrogen as soon as possible.

Cell passage

Growth medium: DMEM+10% FBS+1% P.S+1 µg/mL Puromycin

For the first 1 to 2 passages post-resuscitation, use the recovery medium. Once the cells have stabilized, switch to a growth medium.

- Under normal conditions, these cells exist as both adherent and round suspension cells.
- When changing the medium, take care to retain the suspension cells. During passaging, collect both the adherent and suspension cells together before subculturing.
- Add 1.0 mL of 0.25% (w/v) Trypsin-EDTA solution to dish and observe cells under an inverted microscope until cell layer is dispersed (usually within 1 to 2 minutes at 37°C).
- Note: To avoid clumping do not agitate the cells by hitting or shaking the flask while waiting for the cells to detach. Cells that are difficult to detach may be placed at 37°C to facilitate dispersal.
- Add 2.0 mL of growth medium to mix well and aspirate cells by gently pipetting.
- After centrifugation, resuspend the pellet and add appropriate aliquots of the cell suspension to new culture vessels.
- Incubate cultures at 37°C.

Subcultivation Ratio: A subcultivation ratio of 1:2 - 1:4 is recommended

Medium Renewal: Every 2 to 3 days

Notes

- After the stabilization of the cell condition, there will be fewer dead cells post-passage, the cell growth rate will tend to stabilize, cell morphology will become uniform, and the cells will appear robust.

Sequence

DLL3 Q9NYJ7-1(SP-ECD)

MVSPRMSGLLSQTIVLALIFLPQTRPAGVFELQIHSFGPGPGPGAPRSPCSARLPCRLFFRVCLKPGLSEEAES
PCALGAALSARGPVYTEQPGAPAPDLPLPDGLLQVPERDAWPGTFSFIETWREELGDQIGGPAWSLLARVAG
RRRLAAGGPWARDIQRAGAWELRFSYRARCEPPAVGTACTRLCRPRSAPSRGPGPLRPCAPLEDECEAPLVC

RAGCSPEHGFCEQPGECRCLEGWTGPLCTVPVSTSSCLSPRGPSSATTGCLVPGPGPCDGNPCANGGSCSETP
 RSFECTCPRGFYGLRCEVSGVTCADGPCFNGGLCVGGADPDSAYICHCPPGFQGSNCEKRVDRCSLQPCRNG
 GLCLDLGHALRCRCRAGFAGPRCEHDLDDCAGRACANGGTCVEGGGAHRCSCALGFGGRDCRERADPCAA
 RPCAHGGRCYAHFSGLVACAPGYMGARCEFPVHPDGASALPAAPPGLRPGDPQRYL

Related Products

DLL1	
H_DLL1 CHO-K1 Cell Line	
Anti-DLL1 hIgG1 Antibody(pidilizumab)	
CD3	
H_CD3D CD3E KO Jurkat Cell Line	Jurkat CD3-BsAb Reporter Cell Line
Cynomolgus_CD3 HEK-293 Cell Line	Cynomolgus_CD3E(Membrane Bound ECD) CHO-K1 Cell Line
H_CD3 CHO-K1 Cell Line	H_CD3 HEK-293 Cell Line
H_CD3E(Membrane Bound ECD) CHO-K1 Cell Line	Mouse_CD3 HEK-293 Cell Line
Anti-CD3 epsilon hIgG1 Antibody [OKT-3 (muromonab)]	Anti-CD3 hIgG1 Antibody(CH2527)
Anti-mouse CD3ε mIgG2a Antibody(145-2C11)	
DLL4	
Cynomolgus_DLL4 CHO-K1 Cell Line	H_DLL4 CHO-K1 Cell Line
H_DLL4 HEK-293 Cell Line	
Anti-DLL4 hIgG1 Antibody(MLCK-2(ABL-001))	Anti-DLL4 hIgG2 Antibody(Navicixizumab)
DLL3	
Cynomolgus_DLL3 CHO-K1 Cell Line	H_DLL3 CHO-K1 Cell Line
H_DLL3 CT26 Cell Line	H_DLL3 HEK-293 Cell Line
Anti-DLL3 hIgG1 Reference Antibody(Rovabio)	Anti-H_DLL3 hIgG1 Antibody(Rovalpituzumab)
ADC Related Product	
Anti-DXD Mouse IgG1 Antibody (23E21C5)	Anti-DXD Mouse IgG1 Antibody (4A5A12)
Anti-Dxd Mouse IgG2a Antibody (17D6A4)	Anti-Eribulin Mouse IgG2a Antibody (10F8G4)
Anti-MMAE Mouse IgG1 Antibody (11C10E3)	Anti-MMAE Mouse IgG2a Antibody (17A1K11)
Anti-MMAE Mouse IgG2a Antibody (8F6A3)	Mouse anti Human IgG1-MMAE(Dar4)
Human IgG1 Isotype-DXD (Dar8)	Human IgG1 Isotype-Eribulin (Dar4)
Human IgG1 Isotype-MMAE (Dar4)	
Recombinant DT3C Protein	

License Agreement:

By purchasing and using this cell line product, the user voluntarily agrees to accept and abide by the following policies:

- This cell line product is restricted to research use only and shall not be used for any commercial purposes.

- This product is strictly prohibited from being used in the diagnosis or treatment of human or animal diseases, and shall not be directly used in experiments involving humans.
 - Users are not permitted to modify the cell line in any way, nor to share, distribute, sell, sublicense, or otherwise transfer the licensed materials or their progeny to other laboratories, departments, research institutes, hospitals, universities, biotechnology companies, or any other third parties, except for research activities outsourced on behalf of the licensee.
- If the product is intended to be transferred to a third party, used for commercial development, preclinical or clinical drug functional validation, commercial production testing, or any other applications beyond the scope of this statement, prior written permission must be obtained from Genomeditech (Shanghai) Co.,Ltd. For details, please contact Genomeditech (Shanghai) Co.,Ltd.

Genomeditech